



Unisenza Plus:

smart controls that optimise energy efficiency and indoor climate comfort

Unisenza Plus controls

If we want to create a better future for ourselves, the next generation and the planet, we have to be smart about it. Smart heating solutions such as Unisenza Plus controls guide us towards an indoor climate that's both comfortable and future-proof.

Unisenza Plus is a smart heating system control solution that allows users to easily connect and control numerous heating and cooling devices at the touch of a button. Unisenza stands for a unique sense of comfort and efficiency, easily obtained with a complete, unified control solution. The Plus refers to the extended range of possibilities and compatible products, as well as the added value of a completely wireless network that allows for optimum flexibility in both new construction and renovation projects.

With only a few components such as the Unisenza Plus UFH Gateway, electronic thermostatic head, wired or wireless room thermostat, receiver and underfloor heating wiring centre, it's very easy to make different combinations and configure an entire building by means of a single control range. Via the Unisenza Plus app, users can then monitor and control all the products linked to the app wherever and whenever they want.

Up to 100 devices can easily be linked to form an integrated network that optimises each individual component to achieve the ultimate in both performance and comfort:

- Future-proof range that uses the latest Zigbee 3.0 wireless technology
- Can be integrated as a complete solution from the start or gradually extended
- Modern, functional designs which suit a wide range of mounting requirements
- Simple, intuitive Unisenza Plus app that enables centralised comfort control and energy efficiency
- Possible to control multiple gateways and various buildings within the same app
- Creates an individual WLAN Mesh, even if there is no internet connection available
- 5-year warranty

All our controls are planned to adhere to a standardised concept, which will allow all our app-controlled products to be controlled from the same user-friendly app.

works with alexa

works with the Google Assistant

1 UNISENZA PLUS APP



2 UNISENZA PLUS UFH GATEWAY



3 UNISENZA PLUS UFH RECEIVER RF



4 UNISENZA PLUS ETH



5 UNISENZA PLUS UFH THERMOSTAT RF - 2 CHANNEL



6 UNISENZA PLUS ROOM THERMOSTATS



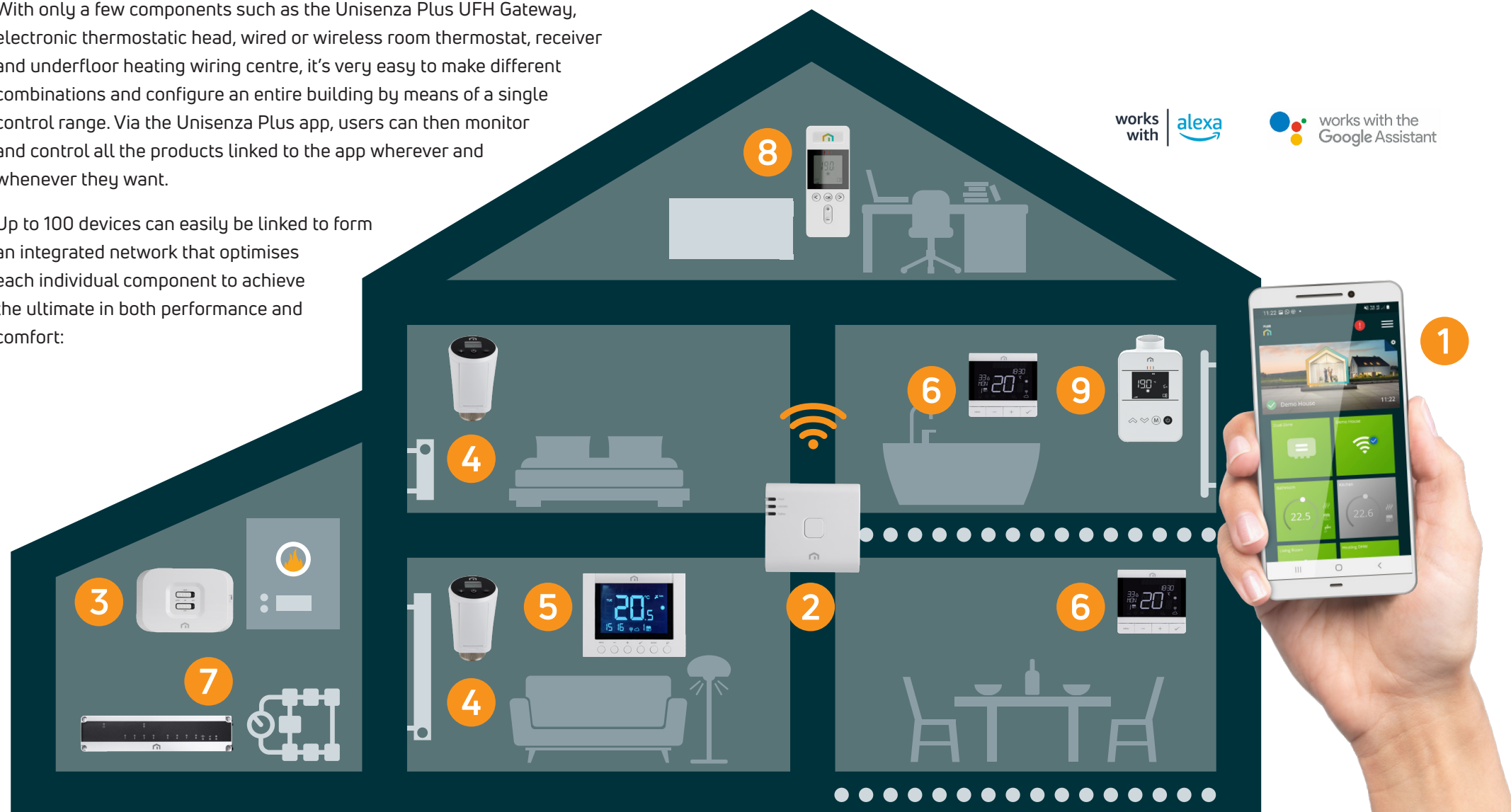
7 UNISENZA PLUS UFH WIRING CENTRE RF



8 RIO PLUS RANGE



9 eLINE CONTROL PLUS coming soon





Unisenza Plus UFH Gateway*

- Central link between devices and to the intuitive Unisenza Plus app
- Integration of the latest Zigbee 3.0 wireless technology
- Connects up to 100 end devices with the Unisenza Plus app
- Connectivity to smart home systems such as Amazon Alexa or Google Home
- Create and manage one or more comfort zones
- Easy cloud connection – connects multiple devices to the cloud through an Internet router with a WiFi or Ethernet cable connection

Unisenza Plus UFH Receiver RF*

- Receiver for wireless control of a boiler, pump and/or zone valves in a central heating system
- Two independent channels for controlling heating, cooling and/or a timer for domestic hot water
- Possibility to pair up to 16 ETHs with the receiver, e.g. to switch off pumps or boilers when valves are closed
- Coupling functions with the various Unisenza Plus thermostats, the electronic thermostatic head (ETH) and the wiring centre
- Integrated OpenTherm controller function with automatic OT/+ interface detection for integration with other OpenTherm devices

Unisenza Plus Electronic Thermostatic Head (ETH)

- Wireless ETH suitable for easy installation in new build and renovation projects to update the existing standard system
- Easy cloud-based control via an intuitive app on a smartphone thanks to the integration of the latest Zigbee 3.0 wireless technology
- Connectivity to smart home systems such as Alexa or Google Home
- In-app installation and diagnostics
- Standard 2x AA batteries – battery life > 2 years
- Geolocation – optional and flexible temperature management through presence detection

Unisenza Plus UFH Thermostat RF – 2 Channel*

- Wireless room thermostat with Zigbee 3.0 protocol
- Two independent channels for controlling heating, cooling and/or time control for domestic hot water
- Coupling option to connect up to 6 ETHs to the thermostat and control them together via thermostat and/or app
- Coupling option with the Unisenza Plus UFH Receiver RF
- Geolocation – optional and flexible temperature management through presence detection

* A standard single zone heating system will require a gateway, 2-channel thermostat and receiver.

Unisenza Plus UFH Thermostat Wired

- Wired room thermostat for heating and/or cooling in 230V version (or 24V, on request)
- Installation in standard flush-mounted box
- Ultra-slim design with a total depth of only 25 mm (the visible part on the wall is only 10 mm)
- Can be used with or without Unisenza Plus Gateway
- Geolocation – optional and flexible temperature management through presence detection
- Floor sensor and discrete air sensor available

Unisenza Plus UFH Thermostat RF

- Wireless room thermostat, for both new buildings and renovation projects
- Suitable for retrofit to existing underfloor systems
- Integrated battery that can be easily charged via a USB cable
- Ultra-slim design with a total depth of just 10 mm
- Integrated humidity sensor for dew point protection in cooling mode
- Easy wall mounting using an innovative wall bracket
- Floor sensor and discrete air sensor available

Unisenza Plus UFH Wiring Centre RF

- Wiring centre that can control up to 8 different RF room thermostats and 3 actuators per terminal
- Wireless connection between the RF room thermostats and wiring centre
- Zones can be assigned manually or via the Unisenza Plus app
- Enables heating and/or cooling
- Versatile application options such as controlling heat and cold generators, pump protection function, external dew point monitoring, etc.



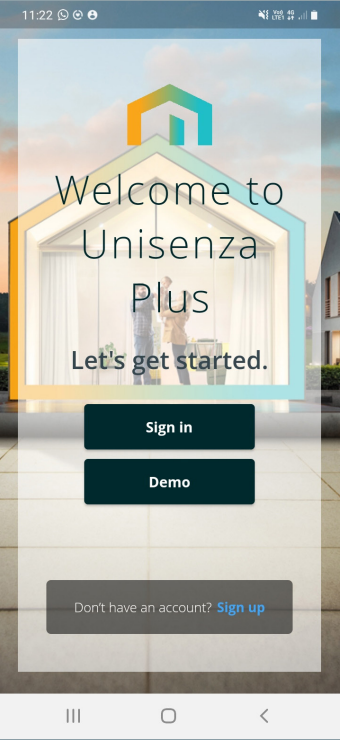
Free app for more flexibility






Each of the Unisenza Plus products can easily be paired and linked to the Unisenza Plus Gateway to form an integrated network that is controllable via the intuitive Unisenza Plus app. With the app users can monitor and control all the linked heat transfer systems wherever and whenever they want. In other words, the heating system becomes more controllable and is very easy to adapt to daily habits.

Using the app, it's very easy to prevent unoccupied rooms from being heated and ensure a comfortable temperature exactly where and when it's needed. What's more, the app allows for multiple gateways to be added. This way users can control the systems in their home as well as, for example, their holiday home or second residence, from a single app.

- Simple, intuitive app enabling easy cloud-based control
- In-app installation and diagnostics
- Offline mode allows access via the app even when there is no internet connection
- Centralised comfort control with a customisable dashboard
- Easy control of all linked products that can be grouped in different zones for optimal energy efficiency
- Permission management to easily share full or restricted access with other occupants or guests
- Practical notifications

Download the Unisenza Plus app:



UNISENZA PLUS CONTROLS RANGE		
Visual	Description	Product Code
	Unisenza Plus UFH Gateway The Unisenza Plus UFH Gateway is the central unit for connecting Unisenza Plus devices to the cloud and an Internet router with a WiFi or Ethernet cable connection. It uses Zigbee 3.0 technology and connects up to 100 end devices. Controllable via the Unisenza Plus App.	50447
	Unisenza Plus UFH Receiver RF The Unisenza Plus UFH Receiver RF with two separate channels can be used for a wireless control of boiler, pump and/or zone valves in an HVAC system. 230V connection. Relay on/off or open therm output.	50446
	Unisenza Plus Electronic Thermostatic Head (ETH) Unisenza Plus Electronic Thermostatic Head with wireless communication function for controlling the thermostatic radiator valve in heating systems. Controllable via the Unisenza Plus App. Connection M30x1,5mm. Adapter for mounting on Danfoss RA valves included.	UNIPLETH
	Unisenza Plus UFH Thermostat RF - 2 Channel The Unisenza Plus Thermostat RF is a wireless room thermostat with Zigbee 3.0. Two channels control outputs via Zigbee wireless communications.	50445
	Unisenza Plus UFH Thermostat Wired The Unisenza Plus UFH Room Thermostats 230V and 24V* are AC powered thermostats for hydronic and electric heating & cooling systems. <i>*24V available only on request</i>	50448
	Unisenza Plus UFH Thermostat RF The Unisenza Plus UFH Thermostat RF is a room thermostat with Zigbee 3.0 technology for the wireless communication with the Unisenza Plus Wiring Centre.	50449
	Unisenza Plus UFH Wiring Centre RF The Unisenza Plus UFH wiring centre works together with up to eight different Unisenza Plus Thermostats RF for hydronic radiant heating & cooling systems.	50450
	Unisenza Actuator Normally closed, power 1W, IP 54 in all mounting positions, with function indicator and snap lock, incl. adapter ring (adapter rings for other makes available on request). First Open function for easy initial installation. 230V 24V	50442 50443

MYSON

Purmo Group (UK) Ltd.
Eastern Avenue
Team Valley
Gateshead
Tyne & Wear
NE11 0PG, UK
T: +44 (0) 330 041 5474
F: +44 (0) 191 491 7568
E: generalenquiries.uk@purmogroup.com
www.myson.co.uk

Every care has been taken in the creation of this document. No part of this document may be reproduced without the express written consent of Purmo Group. Purmo Group accepts no responsibility for any inaccuracies or consequences arising from the use or misuse of the information contained herein.

