

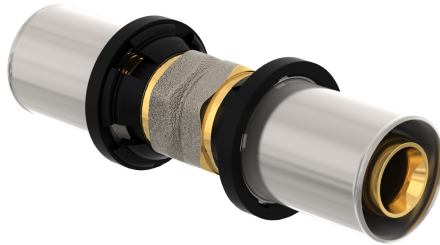
Product Data Sheet

12/21/2025

Manifolds, Cabinets & Mixing Groups

Press fitting UFH

Romania - Purmo



- Enhanced System Efficiency
- Easy Installation
- Durable Construction
- Versatile Compatibility
- Precise Flow Control

Description

Manifold Connection 2 is a robust solution designed to streamline the distribution of heating water in underfloor heating systems. Its durable construction ensures longevity, while its easy installation process saves time for professionals. The manifold offers precise control over flow rates, enhancing the efficiency of the heating system. Compatible with a range of pipe sizes, it makes for a versatile choice in both new installations and retrofits in residential and commercial properties.

Area of Application

Manifold Connection 2 is optimal for distributing heating water in underfloor heating systems. It supports both residential and commercial installations, allowing multi-zone temperature control. It is highly reliable with precise flow rate adjustments and compatible with various pipe sizes.

Selection Criteria

For product selection, refer to our technical documents, product manuals, or use our design service. For a quick selection, use our brochure.

Basic User Instructions

Install Manifold Connection 2 by connecting it to the pipework ensuring proper alignment. Secure all connections and use appropriate sealing methods to prevent leaks. Regularly inspect the system for any signs of wear or damage. Follow manufacturer guidelines for maintenance and operate within specified pressure and temperature limits for optimal performance.

Prescription text specifiers

Manifold Connection 2 is designed for optimal distribution of heating water in underfloor heating systems, suitable for both residential and commercial applications. It ensures precise flow control via adjustable settings and is compatible with various pipe sizes such as 16mm, 20mm, and more. Manufactured from robust materials, it guarantees durability and reliability over time. The manifold features a straightforward installation process, making it ideal for new installations and retrofits. Regular inspections are recommended to maintain optimal performance. Adheres to relevant standards and specifications for safe and efficient operation.

Warranty

Purmo radiators are warranted for a period of 10 years* from date of purchase against all manufacturing defects when they are used in normal conditions and for a heating system with hot water. The warranty does not apply to defects caused by installation or handling errors, misuse or factors external to the radiators, such as water quality or oxygen-permeable pipes.

Underfloor heating products and piping systems elements are warranted for a period of 10 years**.

* 6 years for galvanized radiators and 2 years for all electronic and electric components and spare parts sold separately (side covers, top grilles, plastic clips, plugs, air vents, fixing parts)

** 30 years for PexPenta pipes

Specification

Feature	Unit	Value
Etim Class		EC003024 - Fitting with 2 connections
Depth	Millimetre (mm)	15, 20
Weight	Kilogram (kg)	0.5, 0.6
Height	Millimetre (mm)	15, 20
Model		1-part, 2-part
Shape		Straight
Connection 1		Press sleeve
Connection 2		Press sleeve
Length	Millimetre (mm)	70
Surface protection connection 1		Nickel-plated
Surface treatment connection 1		Pickled
Surface protection connection 2		Nickel-plated
Surface treatment connection 2		Pickled
Contour code connection 1		TH
Contour code connection 2		TH
Max. operating pressure at max. medium temperature	Bar (bar)	10
Main colour fitting		Other
Wall thickness connecting pipe, connection 1	Millimetre (mm)	2
Wall thickness connecting pipe, connection 2	Millimetre (mm)	2
With connection indicator		Yes
Zeta value		5.4
Capped		No
With sealing rings/gaskets		Yes
Nominal diameter connection 2		Other
Eccentric		No
With drain valve		No
With de-aerator		No
Outer pipe diameter connection 1	Millimetre (mm)	14, 17
Outer pipe diameter connection 2	Millimetre (mm)	14, 17
Flange compression class		PN 10
With buffer stud		No
Wall thickness, connection 1	Millimetre (mm)	2
Wall thickness, connection 2	Millimetre (mm)	2
Flange standard		ANSI
FM quality mark		No

Feature	Unit	Value
UL quality mark		No
ULC quality mark		No
LPCB quality mark		No
Material sealing		Ethylene-propylene diene monomer rubber (EPDM)
Reducing		No
Max. operating pressure at 20 °C	Bar (bar)	10
Medium temperature (continuous)	Degrees celsius (°C)	5, 95
Nominal diameter connection 1		Other
With thermal insulation		No
High tensile strength		Yes
System specific		Yes
Material connection 1		Brass
Material connection 2		Brass
Material quality connection 1		CuZn39Pb3 (CW617N)
Material quality connection 2		CuZn39Pb3 (CW617N)

Resources

Document Description	Document Type	Link
----------------------	---------------	------

Items

Global Item Code	Item Description
FAZ5C14S14S00000	Press coupling 14x14 mm
FAZ5C17S17S00000	Press coupling 17x17 mm