

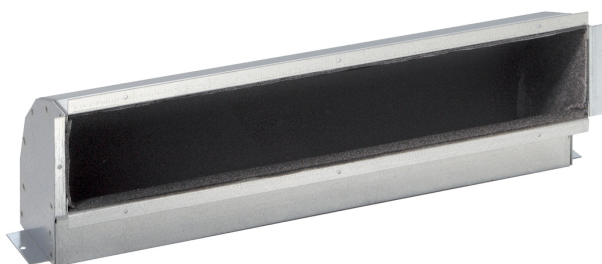
Product Data Sheet

1/12/2026

Convectors & Fan Coils

90° bended duct for iVector

Romania - Purmo



- For ceiling-recessed iVector S2.
- Required for false ceiling installation.
- Connects unit to outlet grille.
- Maintains aesthetic integrity.
- Reliable performance.

Description

The 90° Air Outlet Duct is an essential component for ensuring effective airflow in installations where the unit is recessed in a false ceiling cavity, and the outlet grille is exposed. It guarantees a seamless connection between the unit and the visible grille, making it suitable for both residential and commercial applications.

Area of Application

The 90° Air Outlet Duct is ideal for use with recessed units in false ceiling cavities, specifically when the outlet grille needs to be exposed. This setup is perfect for residential, commercial, and industrial settings requiring directed air distribution.

Selection Criteria

Ensure the selection of a 90° Air Outlet Duct matching the unit model and cavity specifications. For assistance, use our design service, or for a quick selection, refer to our brochure.

Basic User Instructions

Ensure the duct is installed in the specified false ceiling cavity with the outlet grille exposed. For optimal performance, do not obstruct the air duct or outlet. The installation should be handled by qualified personnel, and all maintenance activities should follow safety standards. Regularly check the duct for any blockages that could impede airflow.

Prescription text specifiers

The 90° Air Outlet Duct is designed for use with iVector S2 units recessed in false ceiling cavities where the outlet grille is exposed. It facilitates optimal airflow direction from the unit to the installed grille. This duct is essential for maintaining proper air distribution and ensuring a seamless connection in ceiling-recessed installations. Suitable for residential, commercial, and industrial installations requiring effective air direction while preserving aesthetic appeal. For precise specification, match the duct model with the respective iVector S2 unit and cavity requirements.

Warranty

Warranty 2 years

Specification

Feature	Unit	Value
---------	------	-------

Resources

Document Description	Document Type	Link
Installation guide	Installation Instructions	https://asset.productmarketingcloud.com/api/assetstorage/3577_25d47cfc-b82d-4d25-b3bf-45786bda0dc8

Items

Global Item Code	Item Description
------------------	------------------