

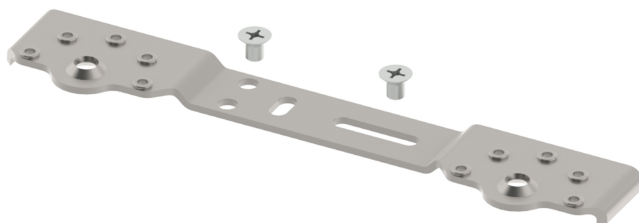
Product Data Sheet

1/12/2026

Convectors & Fan Coils

Wall elbow bracket

Romania - Purmo



- **Sturdy Support**
- **Sound Insulated**
- **Versatile Use**
- **Easy Installation**
- **Professional-Grade**

Description

The Wall Elbow Bracket is crafted to deliver strong and dependable support for radiators in residential, commercial, and industrial settings. Designed to handle loads up to 250 kgs, it features sound insulation to minimize noise transfer. The installation process is straightforward, with a recommended drilling diameter of 18mm. This bracket ensures that your radiators are securely and neatly fixed to the wall, providing both safety and stability over time. For optimal performance, involvement of a professional installer is advised.

Area of Application

The Wall Elbow Bracket is ideal for securely mounting radiators to walls in residential, commercial, and industrial buildings. Suitable for radiators up to 250 kgs, it ensures sound insulation and stability. Installation requires a recommended drilling diameter of 18mm.

Selection Criteria

For selection, contact our design service. For a quick selection guide, refer to our detailed brochure to match your specifications.

Basic User Instructions

Ensure the wall is robust and flat before installation. Use a spirit level for alignment and drill accurately according to the provided markings. Secure the radiator to the wall using the supplied Wall Elbow Brackets, ensuring that all components are correctly and firmly attached. Installation by a professional is recommended, especially for heavy radiators.

Prescription text specifiers

The Wall Elbow Bracket is a robust solution for mounting radiators up to 250 kgs on walls, ensuring secure attachment and sound insulation. It features a recommended drilling diameter of 18mm and comes with all necessary mounting accessories. Suitable for both residential and commercial applications, the bracket ensures that radiators stay securely in place, minimizing noise transfer and enhancing overall stability. For best results, follow the provided installation manual or consult a professional installer. This product is designed to meet high standards of durability and performance.

Warranty

Specification

Feature	Unit	Value
Etim Class		EC010162 - Wall plate on bracket
Depth	Millimetre (mm)	31.5, 42
Weight	Kilogram (kg)	0.13, 0.32
Height	Millimetre (mm)	7
Width / Length	Millimetre (mm)	213, 382

Resources

Document Description	Document Type	Link
----------------------	---------------	------

Items

Global Item Code	Item Description
FAZTA00RAILIN0EO	Radial bracket WallElb onwall
FAZTA00RAILON0EO	Radial bracket WallElb onwall