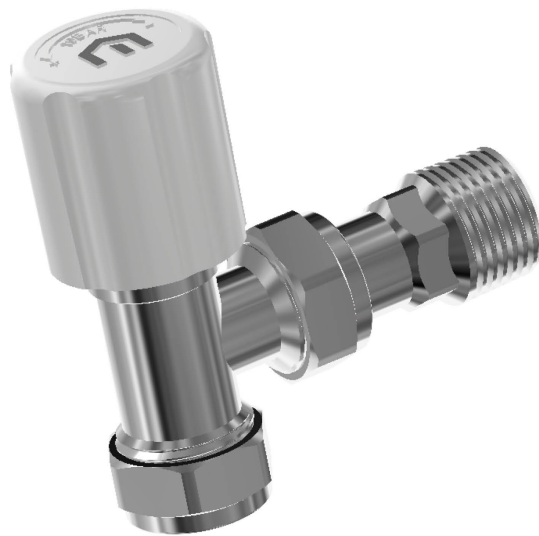


Product Data Sheet

11/3/2025

Matchmate

UK - Myson



- Impact-resistant valve caps
- Compression or push fit connections
- Chrome 3 finish
- Drain-off option available
- Straight or angled

Description

Matchmate radiator valves deliver superior performance for central heating systems in the domestic housing market. Choose from compression, push fit, straight, and angled models to fit your needs. With a high-quality chrome finish and impact-resistant valve caps, these valves are designed to last. Most products also offer a drain-off option, ensuring flexibility and ease of maintenance.

Area of Application

Matchmate radiator valves are ideal for central heating systems in domestic housing. They come with various models like compression, push fit, straight, and angled, to suit different specifications.

Selection Criteria

For selecting or calculating the thermal heat power output, please use our design service. For a quick selection, use our brochure.

Basic User Instructions

Install Matchmate radiator valves neatly onto the radiator using appropriate connections such as compression or push fit options. Ensure that plastic caps are firmly attached for extra durability. Conduct regular maintenance checks for any wear and tear to extend their lifespan. The valves come in chrome finish and offer options for both straight and angled configurations. Models are available with or without drain-off options to fit specific needs.

Prescription text specifiers

Matchmate radiator valves are designed for use in central heating systems within the domestic housing market. They are available in numerous models including compression, push fit, straight, and angled to meet varying specification requirements. All products are finished in chrome 3 and feature impact-resistant plastic valve caps, ensuring the highest quality at competitive prices. Drain-off option is available on most products. Designed under ISO 9001:2008, they are pressure tested in accordance with BS 2767 and come with a 2-year guarantee. Operating pressure is 10 bar for compression and 3 bar for push fit, with operating temperatures up to 120°C for compression and 92°C for push fit.

Warranty

For your additional peace of mind, Purmo Group gives the following Warranty against manufacturing defect. Your statutory rights are not affected by this Warranty.

Subject as provided below, Purmo Group warrants to the original purchaser at the original installation site that its products will be free from defects in materials and workmanship for the following periods:

- Hydronic Radiators: 10 years from date of purchase.*
- Fan Assisted Radiators (ULOW-E2): 2 years from date of purchase.*
- Fan Convectors: 2 years from date of purchase.
- Hydronic Underfloor Heating: 10 years for the pipe from date of purchase.
- Hydronic Underfloor Heating: 2 years on accessories, actuators, ball valves, controls, expansion vessels, fittings, low loss headers, manifolds, mixer control groups & tooling from date of purchase.
- Hydronic Underfloor Heating: 12 months on all pumps from date of purchase.
- Electric Underfloor Heating: 10 years from date of purchase (except programmer & sensor).
- Electric Radiators: 10 years from date of purchase on radiator unit*, electric controls & electronic components; 2 years from date of purchase.*
- Electric Towel Warmers: 2 years from date of purchase.*
- Hydronic Towel Warmers: 5 to 10 years from date of purchase depending on product type.*
- Myson Radiator Valves and Controls: 2 to 5 years from date of purchase, depending on range.

*Products which are exposed to prolonged extreme conditions, such as high humidity or severe cold/condensation, may be subject to deterioration. This is not a result of any manufacturing defect.

Products installed in these circumstances will be subject to a warranty period of twelve months only.

The original purchaser's remedy for breach of this Warranty is expressly limited to repair or replacement of any part or parts found to be defective under conditions of normal service and use during the above Warranty period and does not extend to Purmo Group being liable for any incidental, special or consequential damages or losses whatsoever, such as loss of use of the product, inconvenience or lost profits.

This Warranty does not cover any defect, damage or malfunction in the product which is due to: failure to comply in any respect with Purmo Group's installation, maintenance or operating instructions; faulty storage,

handling, installation or repair; mis-use; neglect; accident; abuse; or general wear and tear.

Before this warranty can be activated, the original purchaser will be required to prove, with supporting documentation, the date and place of purchase, as Purmo Group may need to conduct its investigation into

the alleged defect. This should be within 28 days of the date when the defect was discovered or ought to have reasonably discovered the defect.

Purmo Group reserves the right to make a reasonable charge for inspecting and testing any product which is subject to a Warranty claim and the rights conferred by the Warranty are conditional upon the payment of such charge. The charge may be made, at Purmo Group's discretion, either before or after the inspection and testing of the product. In the event that it is established to Purmo Group's reasonable satisfaction that a valid Warranty claim has been made in respect of the product, then any inspection charge which has been paid will be refunded in full by Purmo Group.

Specification

Feature	Unit	Value
Etim Class		EC010136 - Radiator stop valve
Depth	Millimetre (mm)	120
Weight	Kilogram (kg)	0.0037, 0.0112, 0.15, 0.1515, 0.152 ... 0.25, 0.251, 0.2615, 0.27, 0.31
Width / Length	Millimetre (mm)	130
Model		Other
Height	Millimetre (mm)	120
Shape		Right-angled, Straight
Surface protection		Chromium-plated
Housing material		Brass
Operation		Manually operated
Automatic flow control		No
With straight tailpiece		Yes
Pipe diameter compression set	Millimetre (mm)	15
Pressure independent		No
With dust cap		No
With compression set		No, Yes
Suitable for single pipe system		No, Yes
Suitable for two pipe system		Yes
Size of pipe connection		1/2 inch (15), 3/8 inch (10)
Size of radiator connection		1/2 inch (15)
Shortened construction length		No
Reverse direction of flow		Yes
Size of thermostatic adjustment element connection		M30 x 1.5
Can be preset		No
With sealing ring		Yes
Presetting		None
Thermostatically prepared		No, Yes
With bent tailpiece		No

Resources

Document Description	Document Type	Link
Myson Complete Solutions - Full Brochure	Brochure	https://asset.productmarketingcloud.com/api/assetstorage/3577_24872a57-c3a5-4956-ab4b-dfa3b522c19b
Myson Valves Brochure	Brochure	https://asset.productmarketingcloud.com/api/assetstorage/3577_ef75e07a-fa70-492a-aa8a-b717c52c3ce7
Matchmate brochure	Brochure	https://asset.productmarketingcloud.com/api/assetstorage/3577_084bb705-e57c-422b-9c33-2cda6b2ed794

Items

Global Item Code	Item Description
ADMY8000000YACUK3	Matchmate Lockshield Top Only
ADMY9000000YACUK3	Matchmate Wheelhead Top Only
FDIG10010ABYBHUK0	Matchmate 10mm Lockshield Angle Chrome
FDIG10015AAYBHUK0	Matchmate 15mm Lockshield Straight Chrome
FDIG10015ABYBHUK0	Matchmate 15mm Lockshield Angle Chrome
FDIG10B15AAYBHUK0	Matchmate 1/2" Olive Lockshield Straight Chrome
FDIG10B15ABYBHUK0	Matchmate 1/2" Olive Lockshield Angle Chrome
FDIG20010ABYBHUK0	Matchmate 10mm Lockshield Angle Chrome Drain Off
FDIG20015ABYBHUK0	Matchmate 15mm Lockshield Angle Chrome Drain Off
FDIG20B15ABYBHUK0	Matchmate 1/2" Olive Lockshield Angle Chrome Drain Off
FDIG50010ABYBHUK0	Matchmate 10mm Lockshield Angle Chrome C/W Compression 90 Degree Elbow
FDIG60010ABYBHUK0	Matchmate 10mm LS Angle Chrome Drain Off C/W Compression 90o Elbow
FDIG70010ABYBHUK0	Matchmate 10mm Lockshield Angle Chrome Drain Off Pushfit
FDIG80010ABYBHUK0	Matchmate 10mm LS Angle Chrome Drain Off C/W Pushfit 90 Degree Elbow
FDIG80015ABYBHUK0	Matchmate 15mm LS Angle Chrome Drain Off C/W Pushfit 90 Degree Elbow
FDIG90010AAYBHUK0	Matchmate 10mm Lockshield Straight Chrome Pushfit
FDIG90010ABYBHUK0	Matchmate 10mm Lockshield Angle Chrome Pushfit
FDIG90015ABYBHUK0	Matchmate 15mm Lockshield Angle Chrome Pushfit
FDII10010ABYBHUK0	Matchmate 10mm Lockshield Angle Chrome C/W Pushfit 90 Degree Elbow
FDII10015ABYBHUK0	Matchmate 15mm Lockshield Angle Chrome C/W Pushfit 90 Degree Elbow
FDII20010ABYBHUK0	Matchmate 10mm Wheelhead Angle Chrome
FDII20015AAYBHUK0	Matchmate 15mm Wheelhead Straight Chrome

Global Item Code	Item Description
FDII20015ABYBHUKO	Matchmate 15mm Wheelhead Angle Chrome
FDII20B15AAYBHUKO	Matchmate 1/2" Olive Wheelhead Straight Chrome
FDII20B15ABYBHUKO	Matchmate 1/2" Olive Wheelhead Angle Chrome
FDII30010ABYBHUKO	Matchmate 10mm Wheelhead Angle Chrome C/W Compression 90 Degree Elbow
FDII40010ABYBHUKO	Matchmate 10mm Wheelhead Angle Chrome C/W Pushfit 90 Degree Elbow
FDII40015ABYBHUKO	Matchmate 15mm Wheelhead Angle Chrome C/W Pushfit 90 Degree Elbow
FDII50010ABYBHUKO	Matchmate 10mm Wheelhead Angle Chrome Pushfit
FDII50015ABYBHUKO	Matchmate 15mm Wheelhead Angle Chrome Pushfit