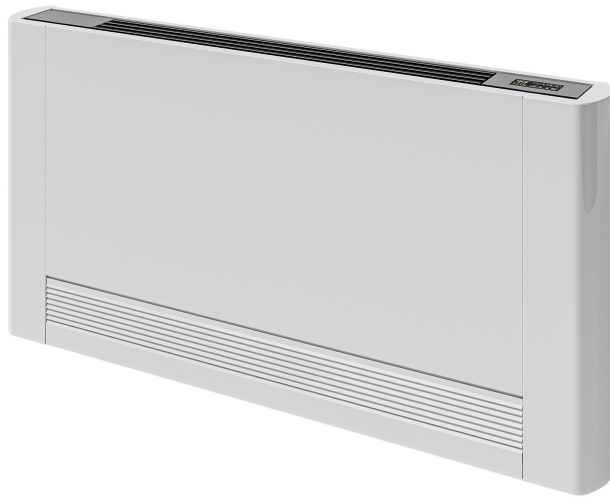


# Product Data Sheet

7/10/2025

## iVector S2

UK - Myson



- Modern, compact design
- Intelligent heating & cooling functions
- Low temperature compatibility
- Quick temperature response
- Flexible installation options

## Description

The iVector S2 is a whisper-quiet fan convector with an attractive, compact design. It offers both heating and cooling functions with higher heat output at lower system temperatures compared to competitive products. With low water content, the iVector S2 quickly responds to room temperature fluctuations. It's compact in size and offers installation options like wall or ceiling mounting and wall or ceiling recessing, as well as floor standing, providing flexible interior design options and energy-efficient benefits.

## Area of Application

The iVector S2 unit is suitable for on-wall/ceiling and in-wall/ceiling heating and cooling solutions. It features low sound levels and a high-capacity fan, making it ideal for quickly climatizing rooms using less energy. It includes options for remote control and 0-10V control via PCB board. This appliance **MUST NOT** be installed in a bathroom or other similar high humidity areas.

## Selection Criteria

For selecting the correct size, please use our online selector at [www.purmo.se/tools/fanconvectors](http://www.purmo.se/tools/fanconvectors) or use our brochure for a quick selection.

## Basic User Instructions

For easy setup, use the display on the unit or the remote control. To remove the hatch for the filter, gently pull up the hatch, remove the filter, and clean it with warm water. The unit provides room temperature regulation with an integrated or wall-mounted remote control. It offers automated fan speed adjustments based on the detected temperature, and various programmable modes like Auto, Silent, Night, and Maximum speed settings.

## Prescription text specifiers

The iVector S2 is available with casing (VS model) or without casing (VSI model), in 5 different lengths. VS models can be mounted vertically on the wall or horizontally on the ceiling, with options for integral controls or remote controls. All units are available in 2 or 4-pipe options and come with pre-fitted valves. VSI models can be recessed vertically or horizontally with wall-mounted remote control options. This unit is ideal for on-wall, in-wall, and ceiling installations, providing heating and cooling with quick operational response thanks to its low water content and high-capacity fan. It's compatible with BMS via 0-10V control.

## Warranty

For your additional peace of mind, Purmo Group gives the following Warranty against manufacturing defect. Your statutory rights are not affected by this Warranty.

Subject as provided below, Purmo Group warrants to the original purchaser at the original installation site that its products will be free from defects in materials and workmanship for the following periods:

- Hydronic Radiators: 10 years from date of purchase.\*
- Fan Assisted Radiators (ULOW-E2): 2 years from date of purchase.\*
- Fan Convectors: 2 years from date of purchase.
- Hydronic Underfloor Heating: 10 years for the pipe from date of purchase.
- Hydronic Underfloor Heating: 2 years on accessories, actuators, ball valves, controls, expansion vessels, fittings, low loss headers, manifolds, mixer control groups & tooling from date of purchase.
- Hydronic Underfloor Heating: 12 months on all pumps from date of purchase.
- Electric Underfloor Heating: 10 years from date of purchase (except programmer & sensor).
- Electric Radiators: 10 years from date of purchase on radiator unit\*, electric controls & electronic components; 2 years from date of purchase.\*
- Electric Towel Warmers: 2 years from date of purchase.\*
- Hydronic Towel Warmers: 5 to 10 years from date of purchase depending on product type.\*
- Myson Radiator Valves and Controls: 2 to 5 years from date of purchase, depending on range.

\*Products which are exposed to prolonged extreme conditions, such as high humidity or severe cold/condensation, may be subject to deterioration. This is not a result of any manufacturing defect. Products installed in these circumstances will be subject to a warranty period of twelve months only.

The original purchaser's remedy for breach of this Warranty is expressly limited to repair or replacement of any part or parts found to be defective under conditions of normal service and use during the above Warranty period and does not extend to Purmo Group being liable for any incidental, special or consequential damages or losses whatsoever, such as loss of use of the product, inconvenience or lost profits.

This Warranty does not cover any defect, damage or malfunction in the product which is due to: failure to comply in any respect with Purmo Group's installation, maintenance or operating instructions; faulty storage,

handling, installation or repair; mis-use; neglect; accident; abuse; or general wear and tear.

Before this warranty can be activated, the original purchaser will be required to prove, with supporting documentation, the date and place of purchase, as Purmo Group may need to conduct its investigation into

the alleged defect. This should be within 28 days of the date when the defect was discovered or ought to have reasonably discovered the defect.

Purmo Group reserves the right to make a reasonable charge for inspecting and testing any product which is subject to a Warranty claim and the rights conferred by the Warranty are conditional upon the payment of such charge. The charge may be made, at Purmo Group's discretion, either before or after the inspection and testing of the product. In the event that it is established to Purmo Group's reasonable satisfaction that a valid Warranty claim has been made in respect of the product, then any inspection charge which has been paid will be refunded in full by Purmo Group.

# Specification

Feature	Unit	Value
Etim Class		EC011034 - Fan coil unit
Item weight	Kilogram (kg)	10, 12, 15, 17, 18, 20, 21, 23, 24, 25, 26, 28, 29, 32, 9
Mounting method		Wall built-in, Wall surface mounted
Colour		White
Width	Millimetre (mm)	1125, 1135, 1325, 1335, 1535, 525, 725, 735, 925, 935
Height	Millimetre (mm)	576, 579, 595, 636, 639
Depth	Millimetre (mm)	126, 131
RAL-number		9003
Length	Millimetre (mm)	1125, 1135, 1325, 1335, 1535, 525, 725, 735, 925, 935
Connection voltage	Volt (V)	230
Frequency		50 Hz
Built-in depth	Millimetre (mm)	126
With filter		Yes
Cooling capacity 25 °C - 7/12 perceived high	Watt (W)	0.46, 0.74, 0.93, 1.59, 1.69, 2.01, 2.23, 2.29, 2.6, 2.94
Cooling capacity 25 °C - 7/12 perceived medium	Watt (W)	0.36, 0.59, 0.71, 0.99, 1.33, 1.64, 1.67, 1.82, 1.86, 2.01
Cooling capacity 25 °C - 7/12 perceived low	Watt (W)	0.23, 0.34, 0.52, 0.57, 0.9, 0.95, 1, 1.11, 1.12, 1.4
Heat emission 20 °C - 75/65 high	Watt (W)	0.71, 1.44, 2.04, 2.21, 2.9, 3.28, 4.71, 6.62, 8.42, 9.54
Heat emission 20 °C - 75/65 medium	Watt (W)	0.62, 1.24, 1.51, 1.74, 2.54, 2.73, 3.28, 4.79, 5.81, 6.33
Heat emission 20 °C - 75/65 low	Watt (W)	0.38, 0.81, 1.28, 1.76, 1.85, 1.87, 2.68, 3.29, 3.34
Cooling capacity according to EN 16430 26 °C - 17/19 perceived high	Watt (W)	0.24, 0.37, 0.49, 0.73, 0.84, 0.95, 1, 1.1, 1.23, 1.36
Cooling capacity according to EN 16430 26 °C - 17/19 perceived medium	Watt (W)	0.18, 0.26, 0.41, 0.54, 0.61, 0.73, 0.78, 0.85, 0.9, 0.94
Cooling capacity according to EN 16430 26 °C - 17/19 perceived low	Watt (W)	0.11, 0.15, 0.27, 0.4, 0.45, 0.49, 0.57, 0.62, 0.66
With drain valve		Yes
With de-aerator		Yes
With grid		Yes
With legs		No
Material grid		Stainless steel

Feature	Unit	Value
Nominal diameter heating		3/4 inch (20)
Nominal diameter cooling		3/4 inch (20)
With fresh air connection		No
Water connections, left		Yes
With level switch		Yes
Front exhaust		No
Surface protection grid		Lacquered, Other
Grid colour		White
Suitable for heating		Yes
Suitable for cooling		Yes
With separate batteries		No, Yes
Heat emission 20 °C - 90/70 high	Watt (W)	0.66, 1.61, 10.11, 11.46, 2.2, 2.64, 3.26, 3.75, 5.62, 7.96
Heat emission 20 °C - 90/70 medium	Watt (W)	0.63, 1.39, 1.87, 1.92, 2.85, 3.13, 3.94, 5.78, 7, 7.63
Heat emission 20 °C - 90/70 low	Watt (W)	0.44, 0.93, 1.03, 1.14, 1.71, 1.97, 2.23, 3.26, 3.99, 5.27
Cooling capacity 25 °C - 6/12 perceived high	Watt (W)	0.46, 0.71, 0.83, 1.56, 1.62, 2.03, 2.27, 2.32, 2.65, 2.95
Cooling capacity 25 °C - 6/12 perceived medium	Watt (W)	0.37, 0.63, 0.74, 1.04, 1.35, 1.62, 1.64, 1.72, 1.87, 1.92
Cooling capacity 25 °C - 6/12 perceived low	Watt (W)	0.25, 0.39, 0.55, 0.63, 0.87, 0.92, 0.94, 1.05, 1.16, 1.29
Air volume high	Cubic metre per hour (m³/h)	132, 146, 260, 294, 370, 438, 476, 542, 567, 663
Air volume medium	Cubic metre per hour (m³/h)	207, 210, 267, 291, 318, 410, 416, 479, 91
Air volume low	Cubic metre per hour (m³/h)	124, 194, 247, 262, 302, 364, 46, 49
Sound pressure level high	Decibel A weighted (dB(A))	51, 53, 54, 55, 57
Sound pressure level medium	Decibel A weighted (dB(A))	44, 45, 46, 47, 48
Sound pressure level low	Decibel A weighted (dB(A))	33, 35, 36, 37
With electric heating element		No
With drip-tray		No, Yes
With built-in position controller		No, Yes
Built-in depth adjustable		No
RAL-number grid		9003
Standard colour		Yes
Degree of gloss		Glossy
Weight	Kilogram (kg)	24, 29

# Resources

Document Description	Document Type	Link
Technical guide	Brochure	<a href="https://asset.productmarketingcloud.com/api/assetstorage/3577_6bb7dcdd-2f57-4bc5-8891-4b0d94db1ebb">https://asset.productmarketingcloud.com/api/assetstorage/3577_6bb7dcdd-2f57-4bc5-8891-4b0d94db1ebb</a>
Myson Fan Convectors - range brochure	Brochure	<a href="https://asset.productmarketingcloud.com/api/assetstorage/3577_d97422e2-aa37-4b96-96fa-cd0889aad38b">https://asset.productmarketingcloud.com/api/assetstorage/3577_d97422e2-aa37-4b96-96fa-cd0889aad38b</a>
Myson Complete Solutions - Full Brochure	Brochure	<a href="https://asset.productmarketingcloud.com/api/assetstorage/3577_24872a57-c3a5-4956-ab4b-dfa3b522c19b">https://asset.productmarketingcloud.com/api/assetstorage/3577_24872a57-c3a5-4956-ab4b-dfa3b522c19b</a>

# Items

HVAC Code	Global Item Code	Item Description
	FHJB0581542A3140	0-10v 576h x 1325w - iVector S2
	FHJA0581342A3110	Auto 579h x 1335w - iVector S2
	FHJA0641544A3140	0-10v 639h x 1535w - iVector S2
	FHJB0640744A3130	Auto Remote 636h x 525w - iVector S2
	FHJA0580942A3130	Auto Remote 579h x 935w - iVector S2
	FHJA0581542A3140	0-10v 579h x 1535w - iVector S2
	FHJB0581342A3130	Auto Remote 576h x 1125w - iVector S2
	FHJB0581342A3140	0-10v 576h x 1125w - iVector S2
	FHJA0580742A3110	Auto 579h x 735w - iVector S2
	FHJA0641144A3140	0-10v 639h x 1135w - iVector S2
	FHJA0640744A3110	
	FHJA0581342A3130	Auto Remote 579h x 1335w - iVector S2
	FHJB0580742A3140	0-10v 576h x 525w - iVector S2
	FHJA0580942A3110	Auto 579h x 935w - iVector S2
	FHJB0580942A3140	
	FHJB0641344A3140	0-10v 636h x 1125w - iVector S2
	FHJA0581542A3110	Auto 579h x 1535w - iVector S2
	FHJA0640744A3140	
	FHJA0581342A3140	0-10v 579h x 1335w - iVector S2
	FHJA0581542A3130	Auto Remote 579h x 1535w - iVector S2
	FHJB0581142A3130	Auto Remote 576h x 925w - iVector S2
	FHJB0640944A3140	0-10v 636h x 725w - iVector S2
	FHJA0641544A3130	Auto Remote 639h x 1535w - iVector S2
	FHJA0580742A3130	Auto Remote 579h x 735w - iVector S2
	FHJB0580742A3130	Auto Remote 576h x 525w - iVector S2
	FHJA0640944A3140	
	FHJB0581542A3130	

HVAC Code	Global Item Code	Item Description
	FHJA0581142A3140	0-10v 579h x 1135w - iVector S2
	FHJA0581142A3110	Auto 579h x 1135w - iVector S2
	FHJB0641144A3130	Auto Remote 636h x 925w - iVector S2
	FHJA0641344A3140	0-10v 639h x 1335w - iVector S2
	FHJB0640744A3140	0-10v 636h x 525w - iVector S2
	FHJB0580942A3130	Auto Remote 576h x 725w - iVector S2
	FHJB0641144A3140	0-10v 636h x 925w - iVector S2
	FHJA0640944A3130	
	FHJA0640944A3110	
	FHJA0581142A3130	Auto Remote 579h x 1135w - iVector S2
	FHJA0641144A3130	Auto Remote 639h x 1135w - iVector S2
	FHJB0581142A3140	
	FHJA0640744A3130	Auto Remote 639h x 735w - iVector S2
	FHJB0641544A3140	
	FHJB0641344A3130	Auto Remote 636h x 1125w - iVector S2
	FHJA0580942A3140	0-10v 579h x 935w - iVector S2
	FHJA0580742A3140	
	FHJB0641544A3130	Auto Remote 636h x 1325w - iVector S2
	FHJA0641144A3110	
VS-13L4IC	FHJA0641344A3110	
VS-13L4RC	FHJA0641344A3130	
VS-15L4IC	FHJA0641544A3110	
VSI-9L4RC	FHJB0640944A3130	